

MINNOW MAYHEM: SPIN FOR BEACH TARPON + OFFSHORE ON THE FLY

FLORIDA SPORTSMAN

*Since
1969*

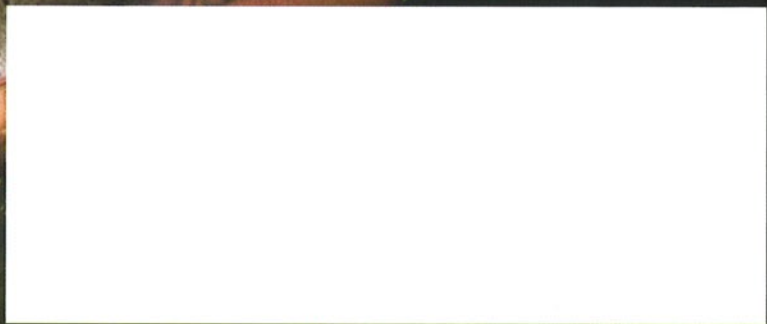
**SEE FISH
EVERYWHERE!**

**10 LESSONS ON CHARTS,
WATER, FISH HABITS & MORE**

**GET
WILD**

- CASTNET RIVER SHRIMP
- SPEARFISH BLUE WATER
- HUNT SWAMP BUCKS

**TAMPA BAY CREEKS
CLEAN WATER, WHERE
IT'S NEEDED**



Hydra Sports 4200SF ↓

The **Hydra Sports 4200SF** offers seating for 15, 7 fish boxes, 3 drink coolers, a freezer, 48 rod holders, 16 drink holders, 2 showers, 2 livewells and a full head. Other options include a tackle rigging station, S.S. sink, BBQ grill and a side-entry dive door. At the helm you will find a triple bolster seat and a console layout that allows for all of the latest electronics. With a fuel capacity of 800 gallons, this super-sized center console has plenty of range even with its max rating of 1,400 horsepower. Rigged with four Yamaha 350s, top speed is 67 mph and you can cruise a total of 490 miles at 46 mph. The 41-foot, 7-inch hull, with 12-foot, 2-inch beam, weighs in at 23,000 pounds fully rigged with four V8s, which gives this boat unsurpassed stability that lets you tournament fish on Saturday and cruise with the family on Sunday. See www.hydrasports.com.

**Blue Wave 2400 Pure Bay** ↑

Performance meets style is the best way to describe the **Blue Wave 2400 Pure Bay**. Computer engineering combined with over 40 years of boat building experience has produced a bay boat that meets the needs of the most demanding angler and looks good doing it. Hand composite construction, including a fully bonded stringer system, yields a high strength, yet lighter-weight hull. The Pure Bay's fully molded inner liner has all of the fishing features you would expect to find in a tournament-winning bay boat. Family features include high-back Cyclone seat at the helm with additional stern seating across the rear casting Livewell has a 3-inch drain and Pro Air Plus recirc pump. The 24-foot, 5-inch LOA and 8-foot, 6-inch beam easily handle the maximum capacity of 300 horsepower, while keeping the dry hull weight a mere 2,200 pounds. See www.bluewaveboats.com.

MotorGuide Xi5 with PinPoint GPS Navigation ←

MotorGuide unveiled big news this summer, introducing the **PinPoint GPS** navigation option for the company's new Xi5 wireless trolling motor. With PinPoint installed, you can stop the boat with a handheld remote and hold a precise, GPS-guided position. You can move in 5-foot increments and store up to 8 locations in anchor mode. For covering



water, you can lock a compass heading at constant speed. Route memory can recall up to 8 routes of 4 miles each. The Xi5 powerplant, also new for this year, offers built-in wireless operation with foot-pedal (freshwater edition), handheld remote (saltwater) or a combination. The Xi5 features fully encapsulated digital electronics and stainless steel hardware, backed by a two-year factory warranty, and a composite shaft covered by a lifetime warranty. The Xi5 is offered in 12-, 24- and 36-volt

Ripple Schooling Rig ↓

This summer, Berkley premiered the three-lure **Ripple Schooling Rig**. It keeps many of the benefits of the original Alabama Rig and other schooling rigs, but solves some of the problems, too—like too heavy, too likely to snag weeds. The Schooling Rig includes a single stainless main stem, with a double dropper horizontal arm at the line-tie. Each arm ends in a 40-pound Cross-Lok snap swivel. The soft Ripple Shad baits are rigged on weighted, weedless worm hooks; the tails beat on the retrieve and the ripples deliver more minnow-like vibrations. Two sizes are available: a 4-inch model with 2 1/2-inch baits, and a 6-inch model with 3-inch baits. It's also possible to unsnap the main stem and fish twin baits buzzbait style. This system should work well in vegetation-rich Florida bass lakes, as well as saltwater flats. The Ripple Schooling Kit costs \$14.99. See www.Berkley-fishing.com.

